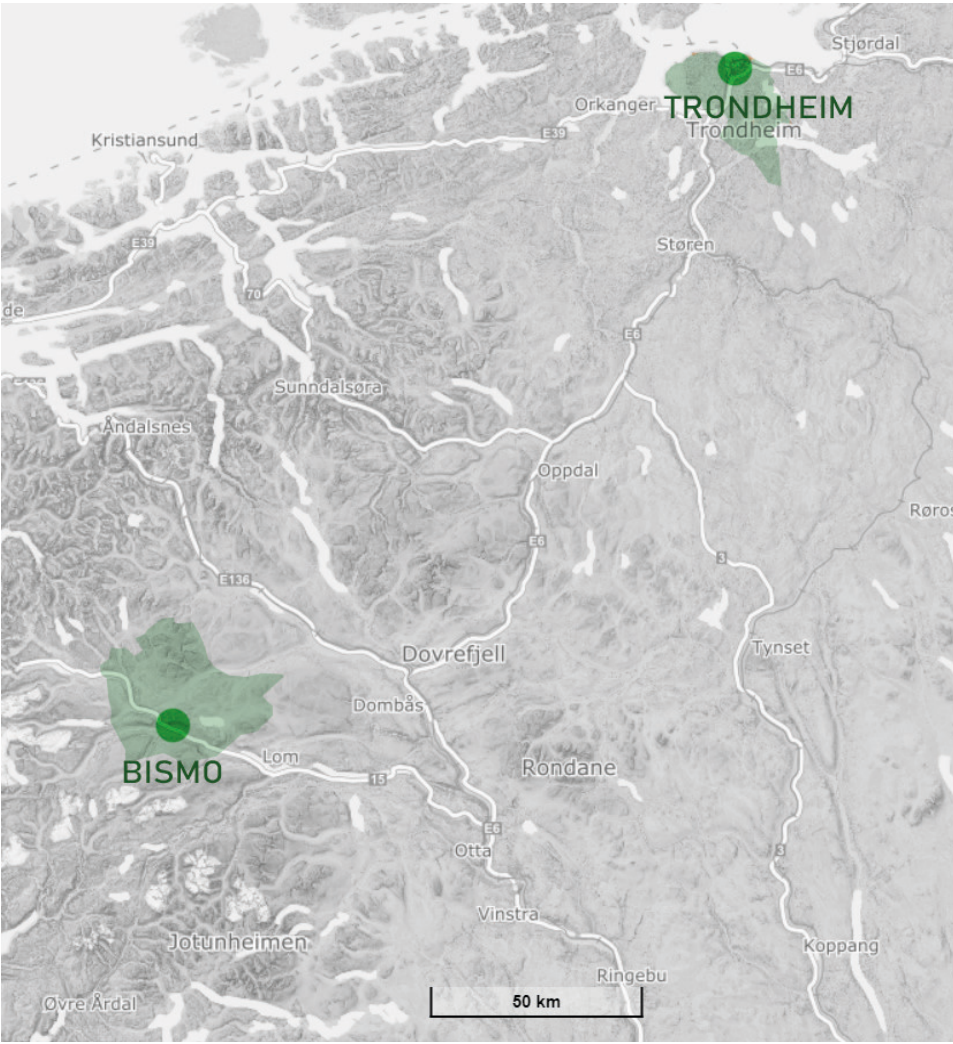
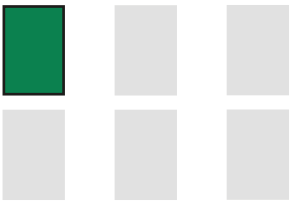


ACTIVATING BISMO

AR4460 OPEN PROJECT COURSE 2
PLANBUSSEN
VENLA VARKILA
XINMIAO MO
INGER ÅSMUNDHAVN

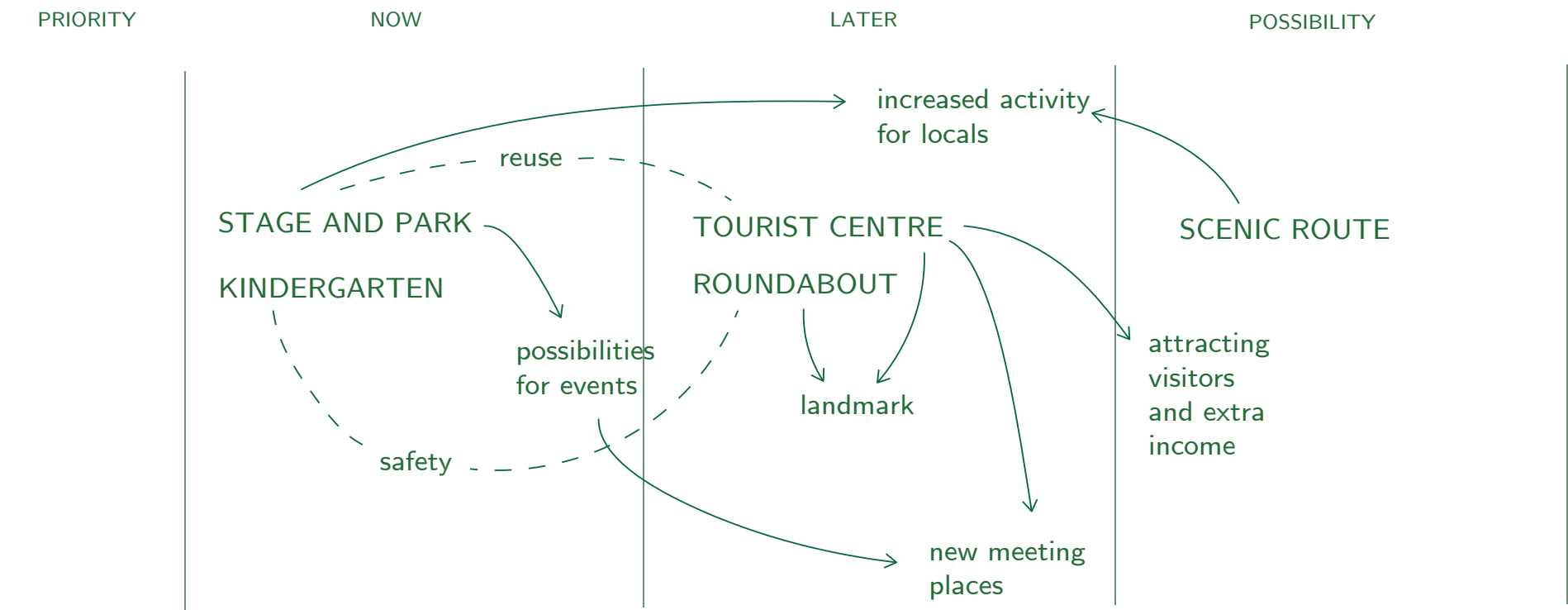


Lom, a popular tourist destination, is located 17 kilometres away from Bismo. Lom has more services and more tourism, but even Bismo has hopes for increasing tourism in the area. The location near hiking trails to mountains and many cabins are signs of Bismo's potential for day or overnight tourism and increased income.

We propose reusing the centrally located Red Cross building by the main road and the existing stage area Stemneplassen. In addition to reuse, we focus on the goal of safety for pedestrians and drivers with creating a new centre for tourist information with a connection to the stage area. This solution will improve the attractiveness of Bismo for visitors and the locals, while potentially bringing more income to the municipality. In addition, connecting the designs to the existing architecture in Bismo and creating landmarks can help to develop a more memorable and noticeable image for Bismo.



PROPOSED TIMELINE



INTRODUCTION

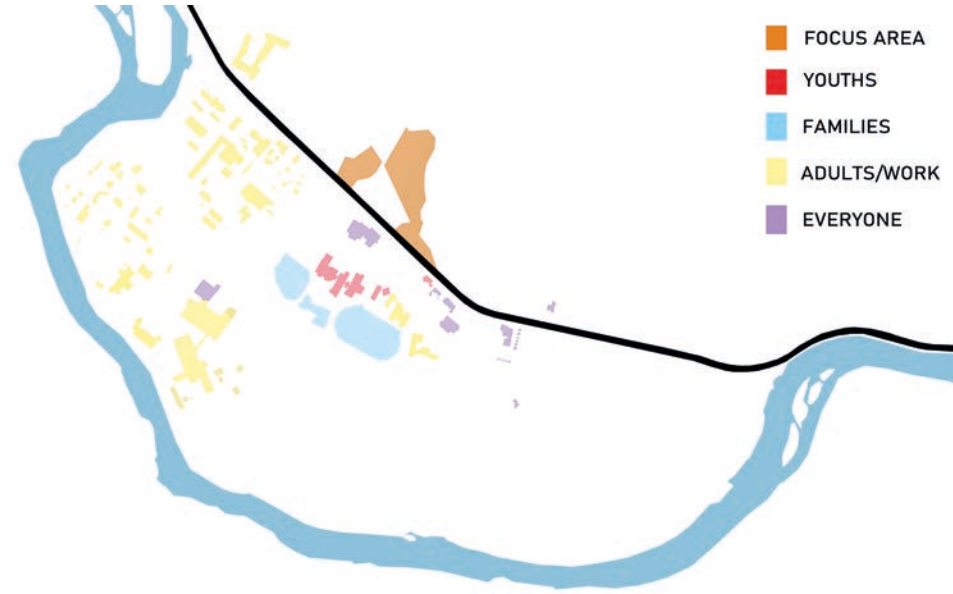
Bismo is the centre of Skjåk municipality, located in a mountain valley by the river Otta. Bismo is clearly divided into areas of industry, services, and housing. The road Fv15 from Otta through Lom towards the coast passes through the Bismo centre.

We learned that there are good connections to hiking areas, but we observed that there is a lack of green public spaces in the centre. Despite the many services in Bismo, there are several unused buildings and spaces in the centre. Another challenge related to preservation we were presented is the kindergarten, which is too small and in a bad condition. In addition, the main road is perceived as unsafe due to an intersection with multiple accidents next to the Red Cross building.

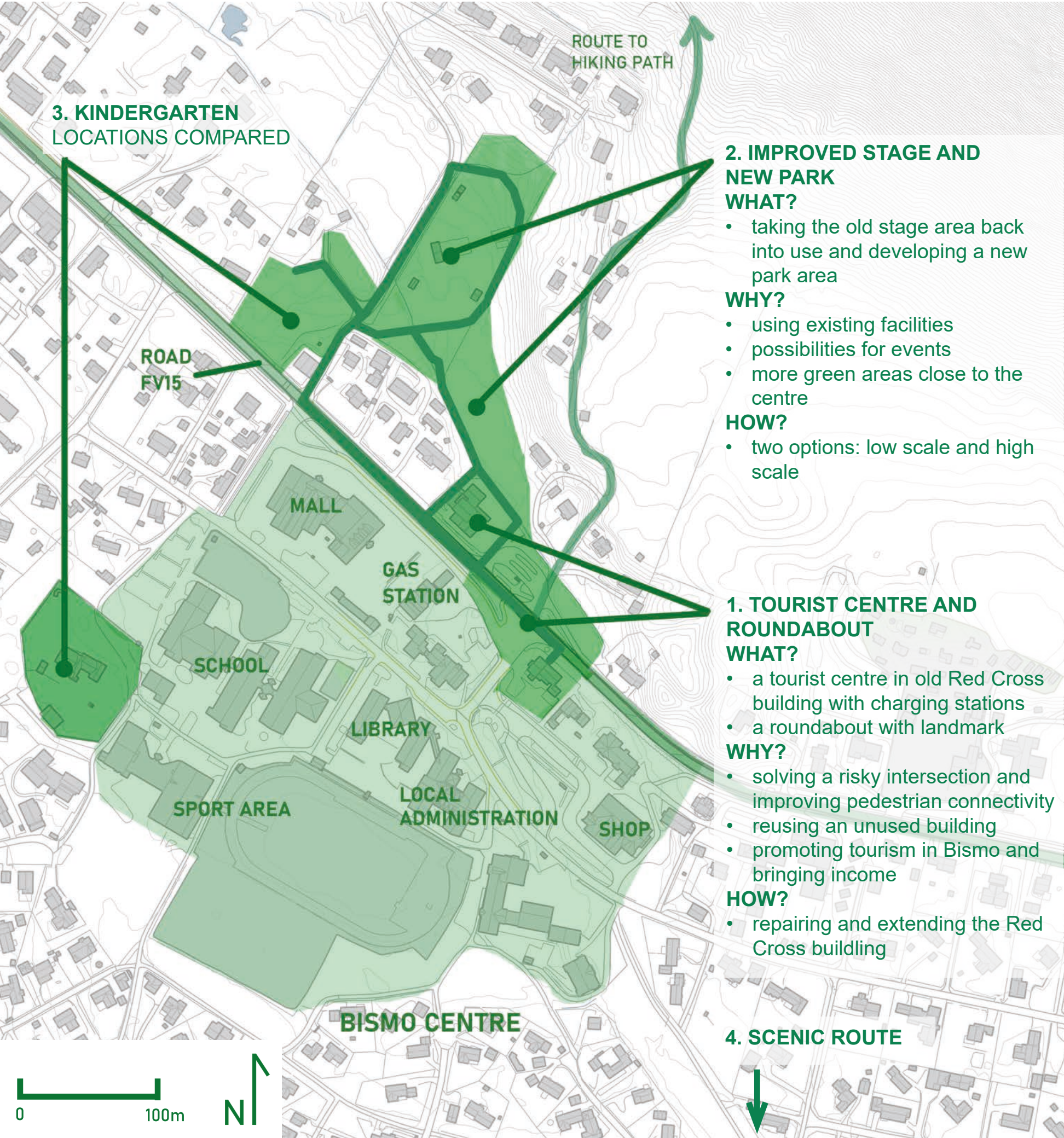
OVERVIEW OF PROPOSALS 1:3000



An analysis of the walking distances in Bismo shows that the area is quite dense and services are easily reachable for pedestrians. The diagram also shows that the unused Red Cross building is very optimally located: it is along the main road and close to the centre of Bismo. However, the car culture is strong in Bismo and people do not feel safe as pedestrians due to the main road.

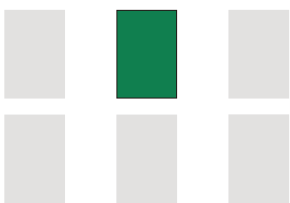


An analysis of the assumed current user groups shows that there is a lot of jobs and industry concentrated in Bismo. It also indicates that there is little space for youth to spend time apart from the school and the library. This inspired us to look for ways to make Bismo more interesting also for the younger generation.

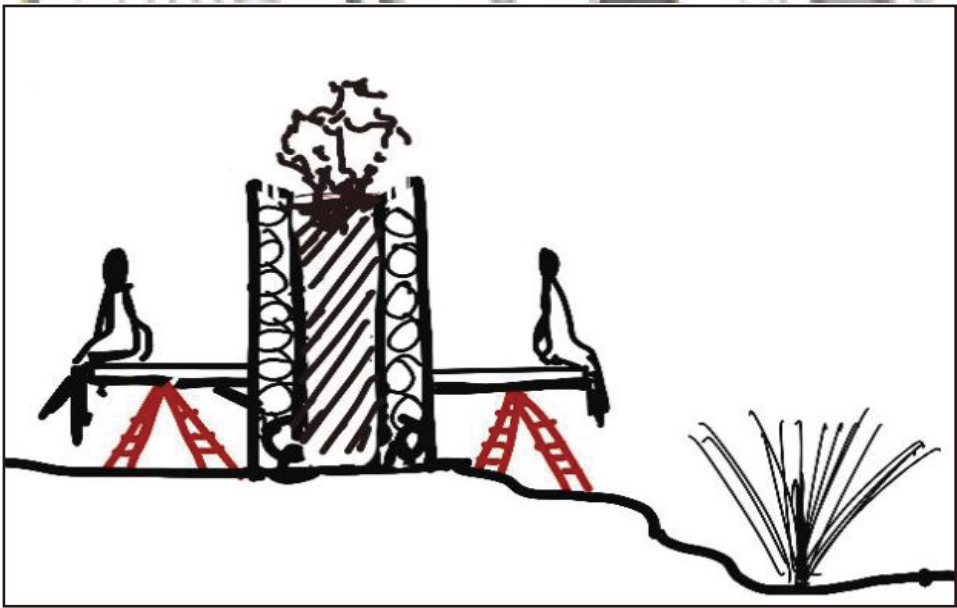
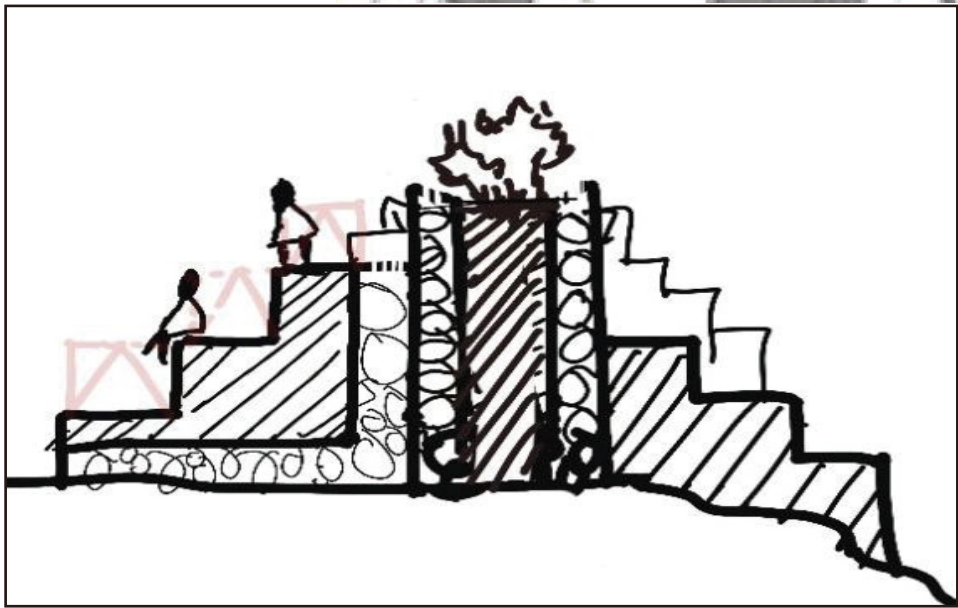


1. TOURIST CENTRE AREA

AAR4460 OPEN PROJECT COURSE 2
PLANBUSSEN
VENLA VARKILA
XINMIAO MO
INGER ÅSMUNDHAVN



COMPARISON FOR CENTRE AREA - BEFORE AND AFTER



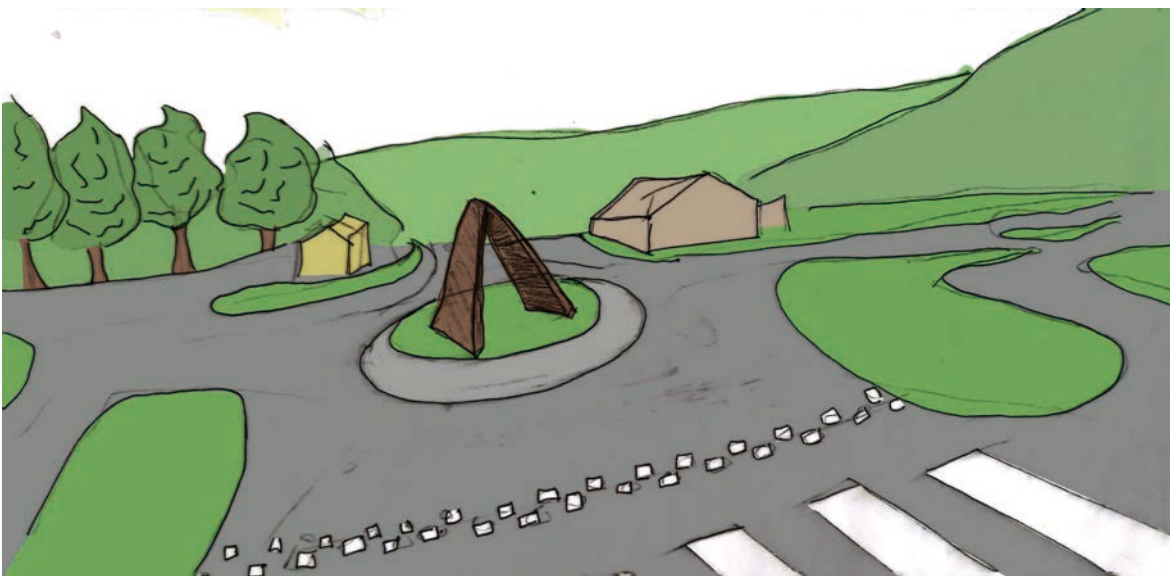
- **Tourist centre:**
providing new meeting and entertainment place
- **New design benches:**
adding more sitting places and green zone
- **Charging station:**
more financial income
- **Roundabout:**
improving the safety of the intersection
- **Youth centre:**
meeting place for the local youth
- **Crossing area:**
improving pedestrian connectivity

COMPARISON FOR ROUNDABOUT AREA

This roundabout contains a landmark designed for Bismo which is inspired by the local architecture and mountain landscape. This represents the importance of local nature for the inhabitants. The landmark can catch attention of passengers and make the identity of Bismo more visible.



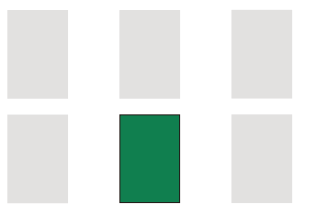
BEFORE



AFTER

TOURIST CENTRE

AAR4460 OPEN PROJECT COURSE 2
PLANBUSSEN
VENLA VARKILA
XINMIAO MO
INGER ÅSMUNDHAVN

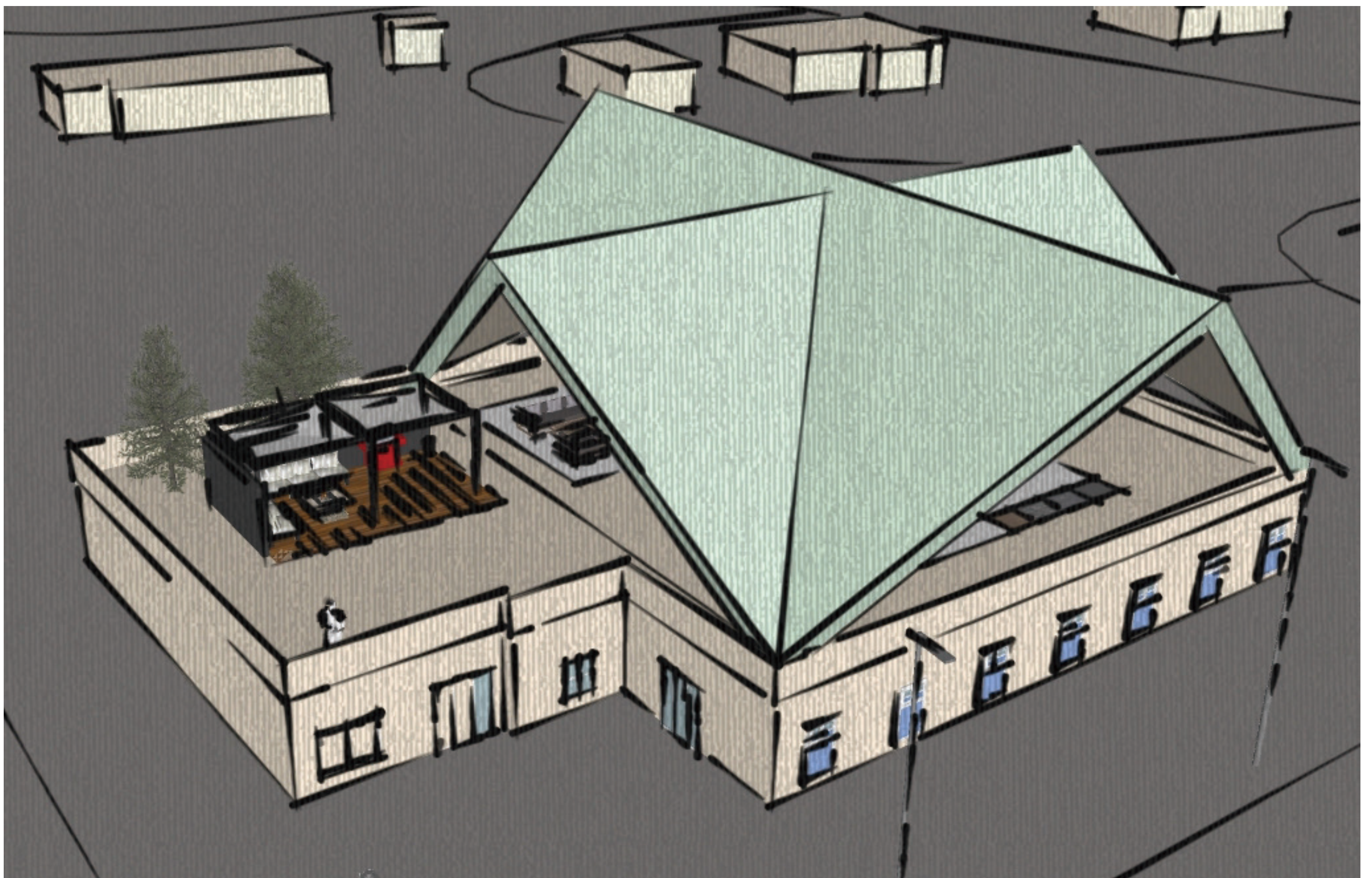


The inspiration for the design comes from the local mountains and architecture. The four sides permit people to appreciate the breathtaking views from multiple directions. It is a perfect meeting place for the whole year. In summer time, the large open air area can serve as a BBQ place. The gable roof also provides shade for people when the temperature is high. During the winter, people can stay in the hall under the mountain roof and have a meeting with friends indoors.



Multiple use of new tourist centre

1. A new landmark for Bismo to give visitors a positive impression
2. The first floor includes an information centre, cafeteria and activity centre
3. The second floor permits different uses such as barbecue, temporary art exhibitions, and a view point with open air



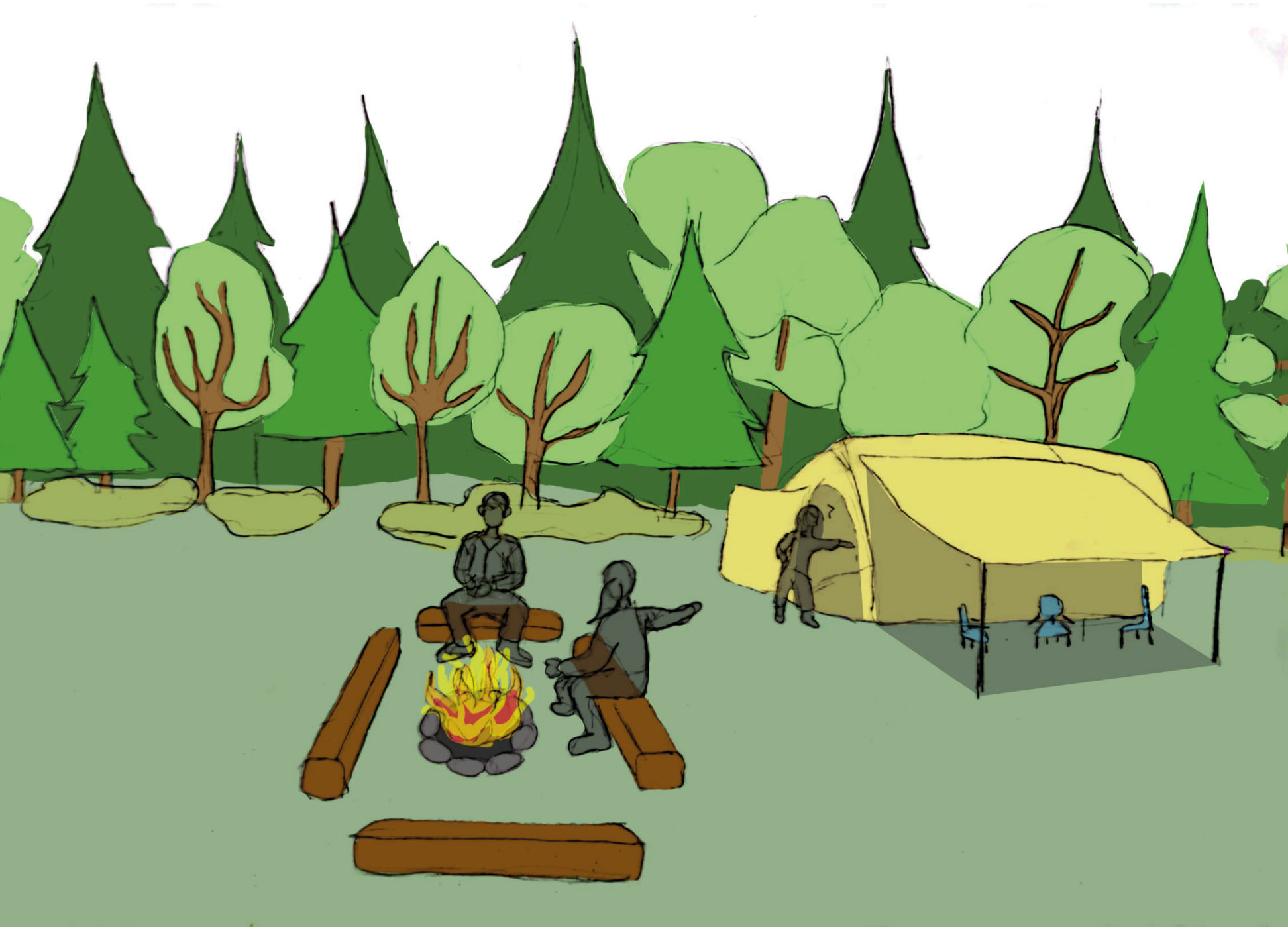
2. STAGE AND PARK

OPTION 1: REPAIRED STAGE + CALM PARK

When we went to Bismo, we were shown the developing tufte park. This inspired our decision to develop this area. This idea is also further supported by our intention to redevelop the Red Cross building into a tourist centre. We also came up with two options for the area: an active option and a calm option. The calm option includes a camping area and park, as well as just restoring the stage and its sitting places to their former glory – no expansion or redevelopment needed. The main driver for this option is the tourist centre. When visiting Bismo, we found a book about hiking trails in Skjåk and Lom. This inspired the idea of developing the field behind it as a camping spot. We think that by making a few gapahuks and planting flowers and more trees the area would be more attractive. Additionally, it could increase the summer tourism in Bismo.

- ADVANTAGES
- less intervention - low cost option
 - preserving the identity of the place
 - more green spaces for locals

- DISADVANTAGES
- lesser activity
 - more difficult to advertise



VIEW OF THE STAGE
The stage has fallen out of use and the seating area is in a state of disrepair.



CURRENT SITUATION



PROPOSAL 1:1000

STAGE AND PARK

OPTION 2: NEW STAGE + ACTIVE PARK

AR4460 OPEN PROJECT COURSE 2
PLANBUSSEN
VENLA VARKILA
XINMIAO MO
INGER ÅSMUNDHAVN

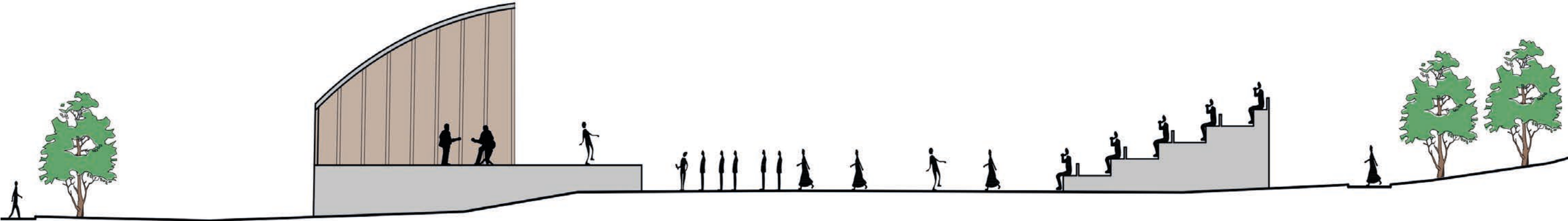
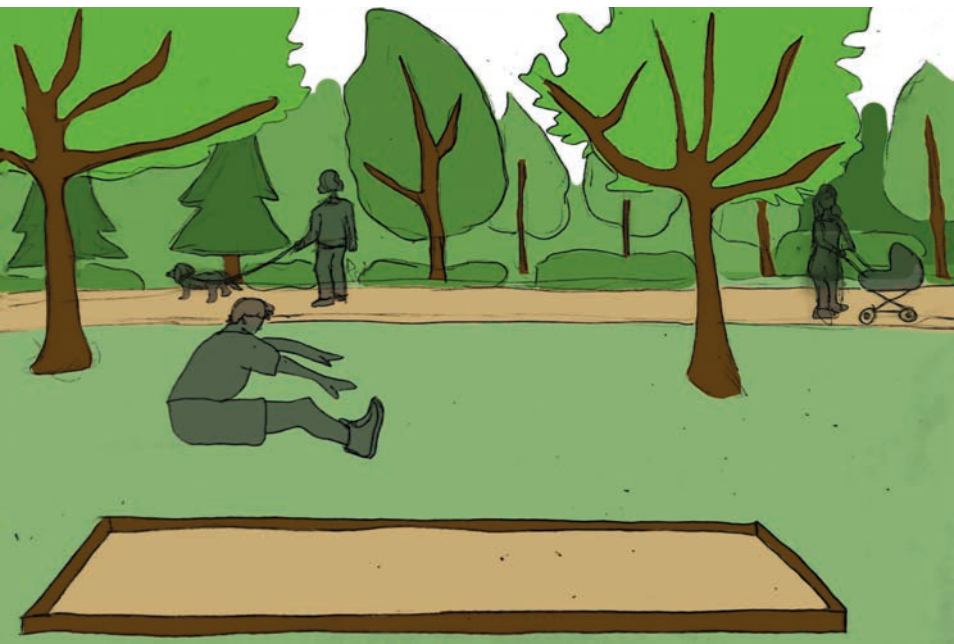


PROPOSAL 1:1000

The active option includes a bigger tuft park area, playground, and a small football field. Physical activity is the main driver for this option. Additionally, we thought that Steneplassen could be fixed up a bit by creating a new seating area and stage, as well as adding permanent toilets. The area was used for a music festival in the past, so why not bring that back? It doesn't need to be a musical area but could be connected to extracurricular activities through Kulturskolen or during days such as the national day or Christmas.

In summary, we think either option could be used as a gathering place on the other side of the main road. With the planned residential area of Hulderåsen and the potential placement of the new kindergarten it makes sense develop this area as well.

- ADVANTAGES
- more variety of activities
 - space for local events attracting locals and tourists
- DISADVANTAGES
- more intervention - more cost
 - less green spaces

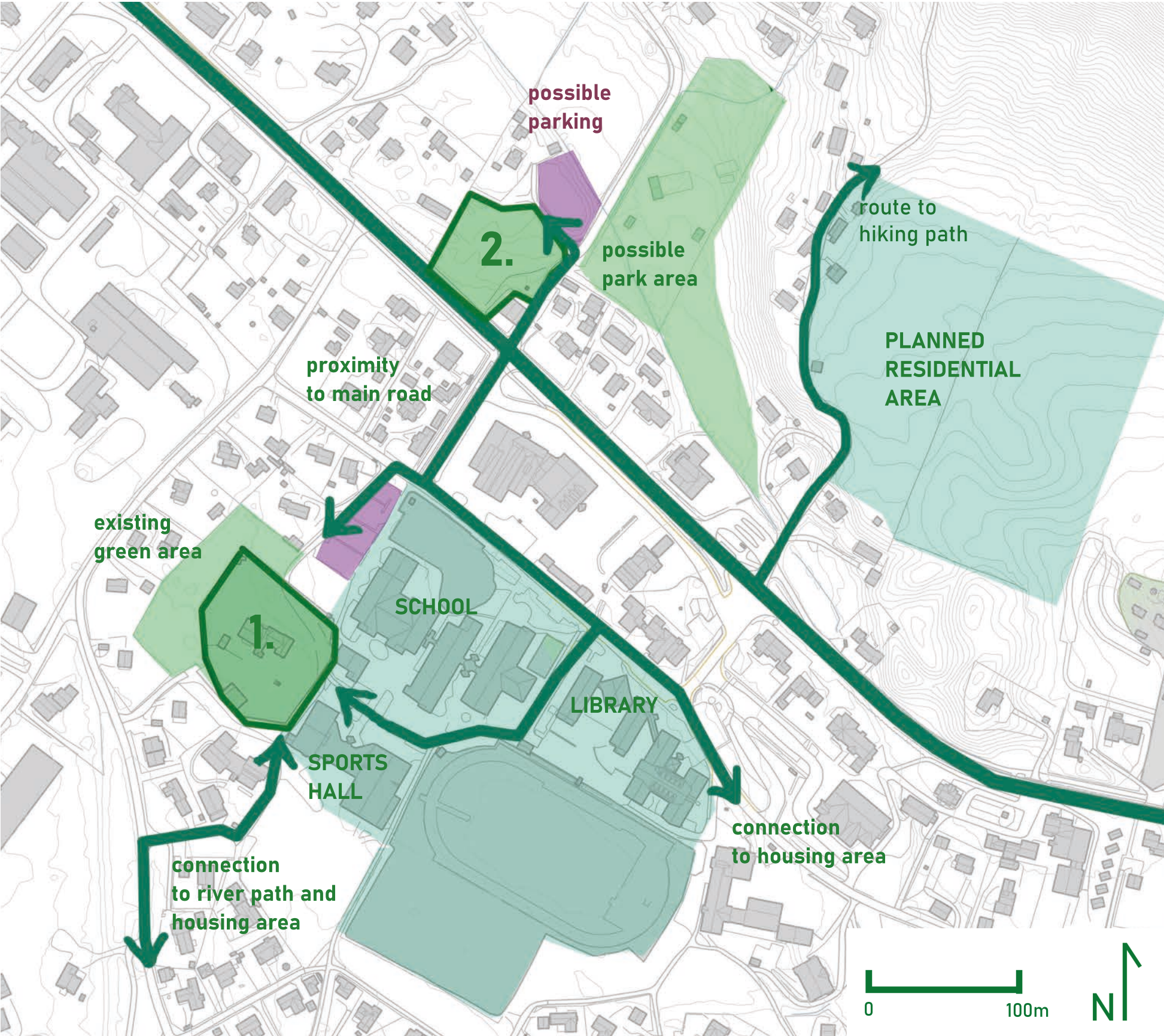


SECTION OF NEW STAGE AREA 1:200

OVERVIEW OF PROPOSALS

INTERVENTION	DEMAND	SOCIO-ECONOMIC IMPACT	RESPONSIBILITY
TOURIST CENTRE	HIGH!	MORE PEOPLE USING LOCAL SERVICES	SKJÅK
TRAFFIC	HIGH!	SAFETY AND CONNECTIVITY FOR PEDESTRINS	SKJÅK, STATENS VEGVESEN
ACTIVITY PARK	MEDIUM	ATTRACTIVE SPACE, UTILIZING GREEN SPACE	SKJÅK, DUGNAD
KINDERGARTEN	HIGH!	FILLING AN EXISTING NEED	SKJÅK
SCENIC ROUTE	LOW	USING THE POTENTIAL OF THE RIVER, UTILIZING GREEN SPACE	SKJÅK

3. KINDERGARTEN



ANALYSIS OF CONNECTIONS 1:3000

OPTION 1: NEW LOCATION
BUILD NEW, REPURPOSE OLD PLOT
ADVANTAGES

- located close to planned housing area, stage and possible park
- easy access by car via Fv15
- new kindergarten can more easily have two floors for more space

DISADVANTAGES

- busy main road has to be crossed to reach library and stream route
- old kindergarten plot has to be repurposed
- currently no space for green area directly next to plot without reducing field area

OPTION 2: OLD LOCATION
REPAIR AND EXPAND OR REPURPOSE PLOT
ADVANTAGES

- preserving existing environment
- close proximity to school, sport area and library without crossing the main road
- parking areas next to school can be used and possibly expanded if needed
- existing green area on the plot
- could be repurposed for use by the sports hall or school

DISADVANTAGES

- repairing and expanding can be resource-intensive and difficult
- expansion would reduce the green area

OVERVIEW
Currently, the kindergarten is too small for the amount of children and the building is in bad condition. It could be repaired, or the kindergarten may be placed in a plot on the north side of Fv15. The different locations have positive and negative attributes both on area level and plot level. Safety, proximity to services and sufficient parking space are necessary to consider for the daily life of inhabitants and the kindergarten, while the proximity to green areas is important for the activity and wellbeing of children.



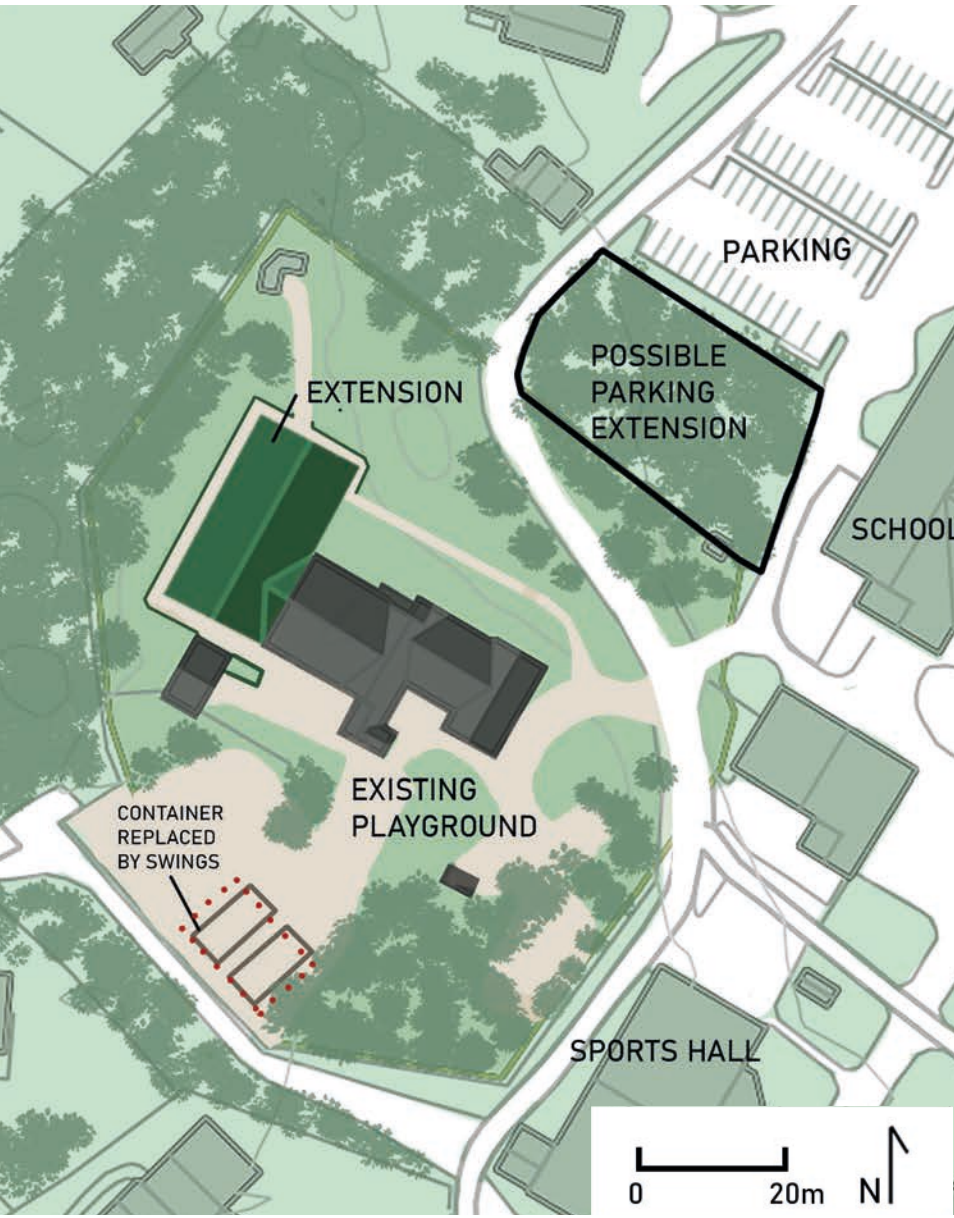
LOCATION 2: CURRENT SITUATION



LOCATION 1: CURRENT SITUATION



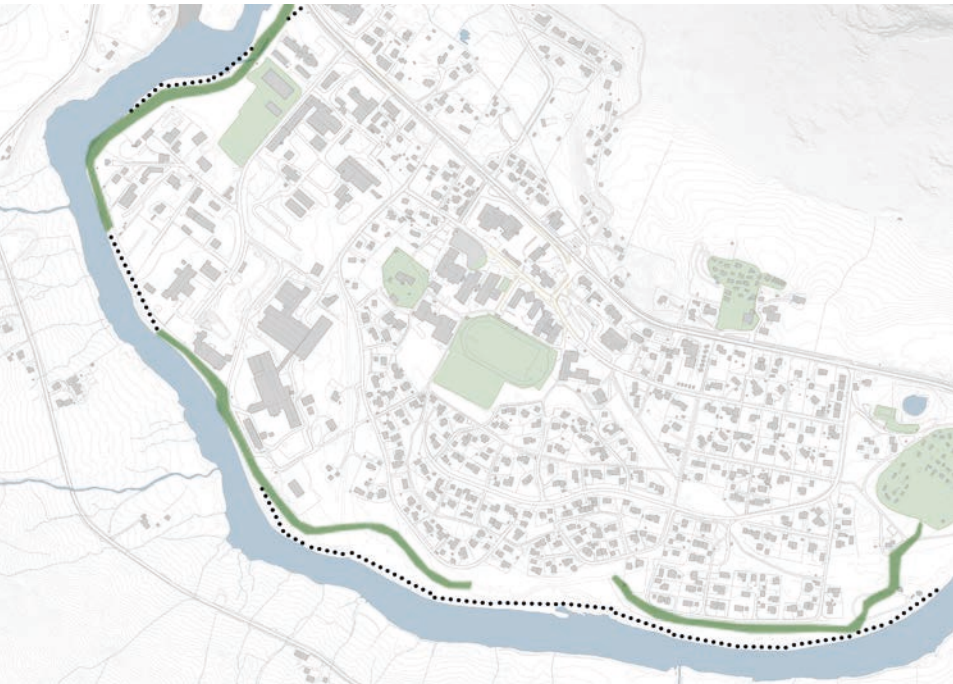
LOCATION 1: EXAMPLE OF PLOT USAGE 1:1000



LOCATION 2: EXTENDED KINDERGARTEN 1:1000

4. SCENIC ROUTE

The planned route along the flood embankment can be made more attractive by adding places for resting and playing at viewpoints along the route. The path can serve both locals and visitors, including all age groups. Placing the structures also highlights local nature and the importance of the river and the mountains for the identity of Bismo.



ROUTE AND PLANNED EMBANKMENTS



VIEW OF THE RIVER FROM THE ROUTE